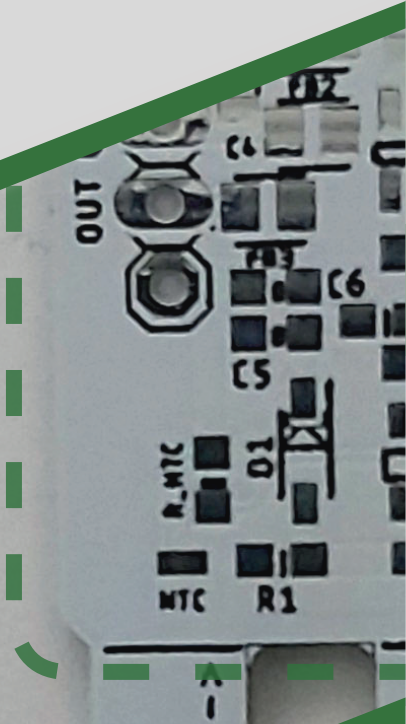


# Soil Moisture Sensor

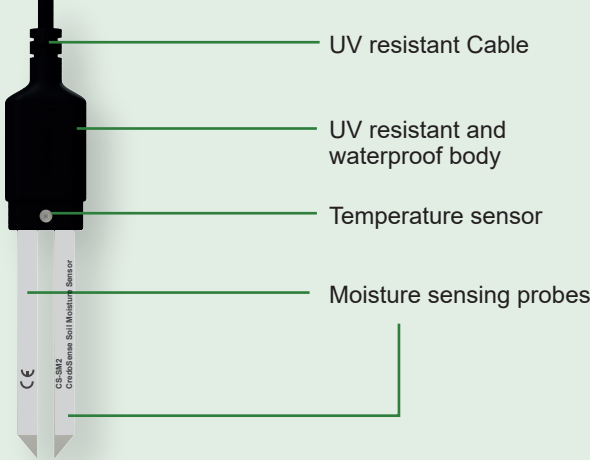
CredoSense uses innovative design and a unique hardware setup to offer fast, reliable, and highly accurate sensor-logger solutions at an extremely affordable price. Our systems are carefully calibrated and tested extensively in diverse environments under various stresses. Our products are manufactured with industry-grade materials suitable for both scientific and industrial applications. We guaranty the highest utility per precious dollar spent.

www.credosense.com



## CS-SM2

Capacitive Soil Moisture Sensor



The CS-SM2 uses capacitive technology to determine the amount (volume) of water (VWC) stored in a soil profile or irrigation required to reach a desired amount of water in the soil at a very affordable price. The sensors are made of industry-grade materials, ensuring their usability in industrial (e.g., agriculture) and research applications. CS-SM2 sensors are calibrated with utmost care and tested for a wide range of soil worldwide.

### FIELD OF APPLICATION

In applications such as agriculture, irrigation scheduling, greenhouse management, horticulture, precision farming, plant ecology, climate research, soil respiration, and hydrology.

### SPECIFICATION

- Accuracy:  $\pm 2.5\%$  typical with most soils (soil solution EC < 10 dS/m). Soil-specific calibration can enhance the accuracy up to  $\sim 2\%$
- Measurement range: VWC 0% to saturation
- Operating temperature:  $-40^{\circ}\text{C}$  to  $+50^{\circ}\text{C}$
- Response time: <100ms
- Power requirement: 5V DC
- Sensing zone:  $\sim 2.5\text{cm}$  radius
- Dimensions: 9mm X 20mm X 90mm
- Wire length: 1m

### KEY FEATURES

- Uses high frequency to minimize soil salinity and textural effects.
- Analog output— hassle-free integration with third-party data logger
- Temperature-corrected technology ensures high accuracy
- Wear-free design and engineered to last long
- Small footprint and compact design
- Can be connected/used with CredoSense CS-DL824 data loggers
- Available as a self-logging system (CSL-SM2)

We offer upto 10% discounts on all products on top of our already low price for educational institutions in developing countries, STEM education, young researchers, and small-scale farms. Contact [sales@credosense.ca](mailto:sales@credosense.ca) for pricing.

We spend the least on marketing so that you can buy at an affordable price. Please help spread the word.

Interested in free samples ? Reach us at [sales@credosense.ca](mailto:sales@credosense.ca)

CredoSense Inc.

Toronto, Ontario, Canada  
[sales@credosense.ca](mailto:sales@credosense.ca)  
+1-647-608-0367