

Quick Guide

CSL-Display Unit

CSL-EDU10

Last updated: May 8, 2024



CREDOSENSE INC. (LTD.)
support@credosense.com
www.credosense.com

c r e C < S < - z S ^ > G C - z - q C s > - ^ @ ; b \ e b ^ C ^ z a f C q f S . . .

c i c r e C < S < - z S ^ s

á a e C q z S ^ L y C \ e C q z - q C p - ^ L C = - 2 0 ° ; z b 6 0 ° ; i

á ? S e Y % c i D S ^ < P y G y @ S e Y % . S P - q C s b Y - z S ^ b H c | D c v C E e S f C s i

á d b q z y % C = } r 3 y % C Q e b q z t < b \ e - z S ^ C . . S P c , > l , Q P - q C q j

á 3 - z z C q % 3 - < W e = l P b - q s f < b ^ z S ^ - b - s ~ s C j

á ; b \ e - z ? S C ^ s S ^ s = c C E \ \ u c \ \ | v \ \ i

á „ C S L P z = | C E E i

c i | G C - z - q C s

á p C Y Q S C @ S e Y % ^ @ s z b q L C b H < - q C ^ z @ - z - f s z b q C s Y - s z c C E f - Y - C s j

á r P b . . s 4 b z P [S ^ S \ - ^ @ [- † S \ - f - Y - C s - Y b ^ L s S e C q - ^ z S C i

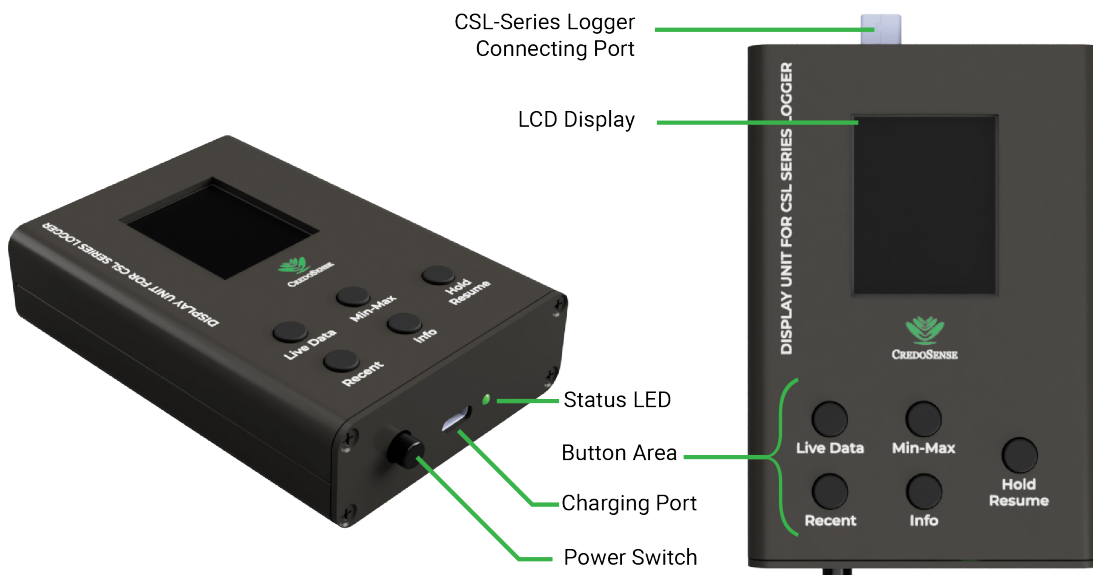
á a e z S ^ z b z b L L Y C 4 C z . . C C ^ ; C S S - s - ^ @ G - P q ^ P C S z z C \ e C q z - q C ~ ^ S z i

á d b . . C q s ; r X Q C q C s X b L L C q s i

á B I ~ S e C @ . . S P - P S L P Q b ^ z q - s z @ S e Y % H b q C t < C Y C ^ z f S S A S S % C f C ^ S ^ s - ^ Y S P z i

á d Y - L Q ^ @ C e Y % H ^ < z S ^ - Y % ^ b s C z - e b q e q L q \ \ S ^ L ^ C C @ C i

c i { ; b \ e b ^ C ^ z a f C q f S . . .



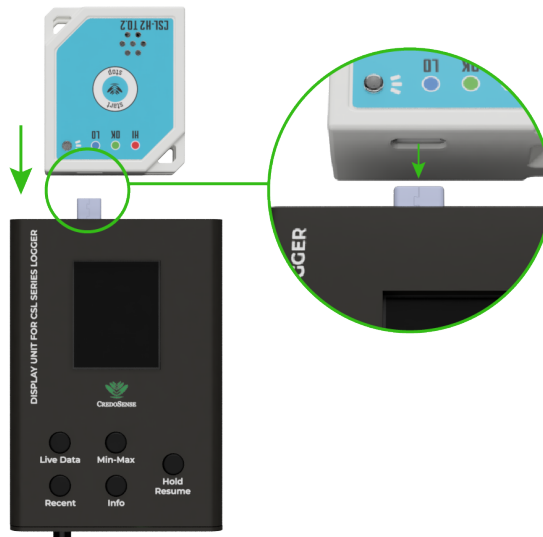
G S - q C c = r P b . . S ^ L @ S C q C ^ z e - q s b H z P C @ C f S < i

| a eCq zS'L ? SeY%q ^S

y b sz-q zPC @CfSC>S\ eY%eqCss zPCeb..Cq 4~z b^>-s S'@S- zC@S' GS~qCi a ^<Ce qCssC@>%~
..SYsCC- eq\ ez S'szq-zS'L %~ zb <b^^Cz - ; rXQ CqS XbLLCq fGS~q | g d q<C@zb <b^^Cz
- ; rX rCqS XbLLCq zb zPC @CfSCt GS~q { sPb..s Pb... zb <b^^Cz zPC YbLLCq } eb^ s-<<Cst+Y
<b^^Cz zS^>zPC @CfSC...SYzq ^sSb^ zb zPC XfCQ -z- e-LC fGS~q v-g--zb\ -zS- Y%o



GS~q | =? CfSC S eb..Cq@Q-ei



GS~q { =; b^^CzS'L - ; rXQ CqS XbLLCq

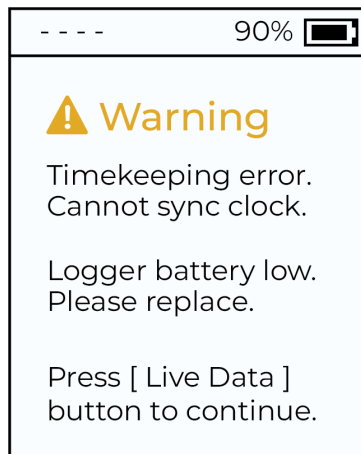
] a y B=Ob..CfCq>H- ^%Cqpbq bq ...q^S'LS b<<-q @-q^L zPC eq<Cst>zPC -sCq ..SY 4C
@Cq-zC@zb zPC e-LC sPb..^ S' GS~q Ji

{ „ -q^S^L

y..b z%Cs bH..-q^S^L \ C\$-L\$ <- ^ -eeG-q..PC^ zPC @f\$C \$ z-q^C@b^i

á y S\ CWCCeS^L B qpbq=y P\$ b<<-q\$..PC^ zPC @SeY%σ^S -zz\ ezs zb s%<Pcb^S C\$ <Yb<W
..SP zPC; rXQ CqCs XbLLCq RHzPC; rXQ CqCs XbLLCq s <Yb<WS^ z H^<zS^S^L edpeCq%
zPC @SeY%σ^S <- ^bz -@U-sz S\$ b..^ <Yb<W- <bq^S^LY%o

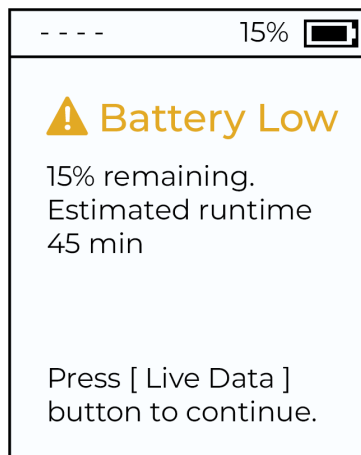
á Xb... 3-zzCq%o, -q^S^L=y P\$...q^S^L \$ @SeY%Q@..PC^ zPC 4-zzCq%oCfCYbHzPC; rXQ
rCqCs XbLLCq \$ Yb..i



GS~qJ=r Pb..S^L „ -q^S^Li

] a y B=y PC @SeY%σ^S edf\$C eb..Cq zb zPC YbLLCq..PC^ zPC%oqC <b^CzC@ y PCqQ
Hbq>zPCeqC^<CbHzPC; p|JI CE4-zzCq%\$ zPC; rXQ CqCs XbLLCq \$ ^bz qI ~Sq@HbqzPC @SeY%
~^S zb H^<zS^ edpeCq%o

RHzPC 4-zzCq%oCfCY \$ Yb..>zPC @f\$C \ -%@SeY%σ^ -@S^Y...-q^S^L>-s SY-szq-zC@ S^
GS~qI i



GS~qI = R^@S- zS^L Yb... 4-zzCq%o

{

